



AVIE'S PLACE

- PARK & PLAYGROUND -

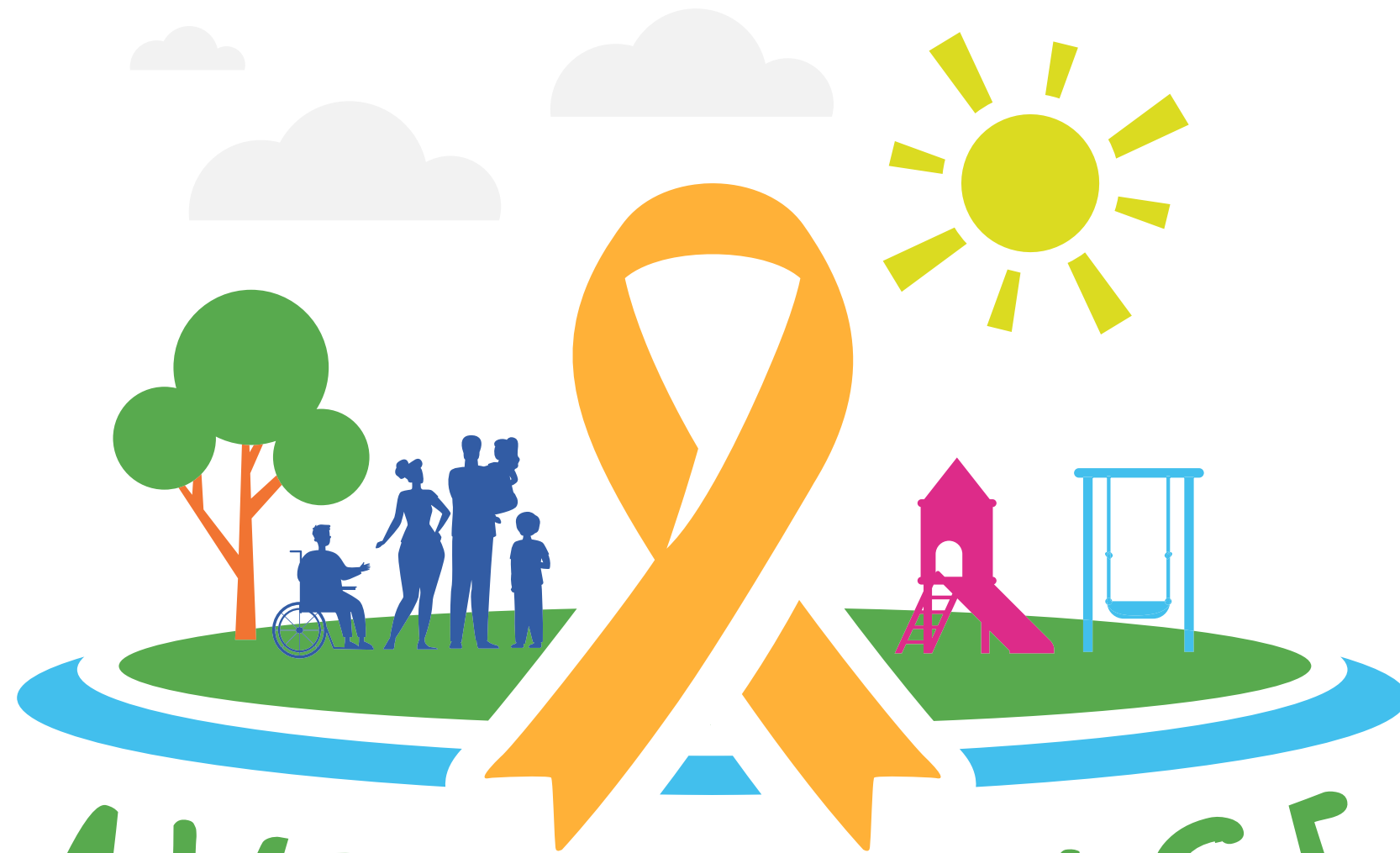
MASTER PLAN BOOKLET 2022



#2447 02.10.22

INCLUSION . DISCOVERY . COMMUNITY . HOPE

AVIE'S PLACE



AVIE'S PLACE
- PARK AND PLAYGROUND -

ACKNOWLEDGMENTS

Prepared for

THE WALLACE FAMILY
&
RESTORATION MINISTRIES, INC.
Oroville, CA



Partners



Prepared By

Melton Design Group

Greg Melton, Principal Landscape Architect
Patrick Farrar, Senior Project Manager
Sarah Crossley, Landscape and Architectural Designer
Daniel Louder, Production Specialist
Aubrey Hendricks, Landscape and Architectural Designer
Jared Gibson, Landscape Designer
Ryan Riedlinger, Landscape Designer
Geoffrey Mullennix, Graphic and Landscape Designer



Melton Design Group
820 Broadway Street
Chico, CA 95928



TABLE OF CONTENTS

Introduction

- Vision
- Project Goals
- Project Funding

Existing Conditions

- Location and Site Map

Master Plan

- Master Plan & Program

Design Elements: Arrival & Imagination Square

- Avie’s Place Gateway
- Rainbow, Bravery & Adventure Bridge
- Imagination Square
- Fountain of Hope

Hero Heights Playground

- What is Inclusive Play?
- Headquarters (5-12 Inclusive Playground)
- The Academy (2-12 Inclusive Toddler Playground)
- Victory Mountain
- Inclusive Play - Options

The Cove - Lake & Village

- Cove Lake & Pirate Ship
- Cove Village - Overnight Cottages

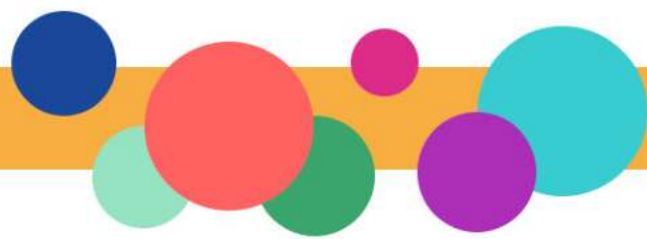
Site Amenities

- Freedom Swings & Music Studio
- Dog Park & Dancing Waters Splash pad
- Avie’s Dream Theater & Wall of Heroes
- Wheelchair Pump Track & Wildflower Meadow

Thank You For Your Support!



The Wallace Family



AVIE'S PLACE



INTRO

Avie's Place is being built in memory of Avalynn Wallace, daughter of Louie and Nicole Wallace. Avalynn was called to heaven in October 2019 at the age of seven following a grueling three-year-long struggle with AML (Acute myeloid leukemia). Her strength inspired the Wallace family and our entire community to create Avie's Place.

VISION

There are NO OTHER parks in the 22 County region north of Sacramento (representing 42,000 square miles and 1.7 million people) that have been purpose-built for use by children with intellectual and developmental disabilities.

Avie's Place is a unique opportunity for renewal and improvement across Oroville, Butte County, and our surrounding region.

Once completed, the project will:
Deliver ongoing recreation, fitness, and active-living opportunities to all children (as well as seniors, veterans, and other adults with restricted mobility).
Raise the quality of life in our community and act as a symbol of what can be accomplished through a community-focused partnership.



PROJECT FUNDING

Avie's Place is privately funded through friends, family and community. The Goal is \$4,000,000 to complete the park as envisioned.

Would you like to help?

There are many ways you can help support Avie's Place:

1. Make a donation on our website at aviesplace.org
2. Create a Fundraiser
3. Share Our Story

Every bit of support helps us to work towards our goal so that we can create a place for everyone to play and belong.

Donate

Follow

Fundraise



AVIE'S PLACE SITE



SITE INFORMATION

Avie's Place will be a 2 acre, Americans with Disabilities Act certified playground, and will feature a range of installations that promote spinning, sliding, rocking and sensory engagement for children of all abilities and ages.

The playground will sit on a 91-acre plot of land on the Oro Bangor Highway in Oroville. The property is owned by the church and used extensively for outdoor services, community celebrations and our endurance event program.



AVIE'S PLACE

PROGRAM:

ARRIVAL & PARKING LOT

MAIN ENTRY

- THEMED GATEWAY

IMAGINATION SQUARE

- AVIE'S HOUSE
- THEMED PLAYHOUSES
- FOUNTAIN OF HOPE

DANCING WATERS SPRAY GROUND

- GATEWAY
- PICNIC AREA & OBSERVATION DECK

BRIDGES

THE COVE LAKE & VILLAGE

- BOARDWALK & PIRATE SHIP
- WATER SPRAYS & LIGHTING
- BEACH & WATER PLAY
- RENTABLE CABINS, ACCESS TRAILS

CREEK HEADWATER

- RECIRCULATING & WATER PLAY

HERO HEIGHTS PLAYGROUND

- 5-12 PLAYGROUND
- 2-12 TODDLER PLAYGROUND
- VICTORY MOUNTAIN
- CLIMBING WALL & TUNNELS
- ETC...

WILDFLOWER MEADOW & WHEELCHAIR PUMP TRACK

- SENSORY EXPLORATION
- WHEELCHAIR ACCESSIBLE PUMP TRACK

THE PAVILION

- PIZZA OVEN, TREE CHANDELIER,
- TABLES & BENCHES

FREEDOM SWINGS

- STANDARD, WHEELCHAIR & FRIENDSHIP

AVIE'S DREAM AMPHITHEATER

- TERRACED LOG SEATING
- MURAL
- GATEWAY
- LANDSCAPE & LIGHTING

WALL OF HEROES

- SHADOW BOXES W/ HEROES PHOTOS & DESCRIPTIONS

STREET SIGNS

- THEMED STREET NAMES, RIDE OR WALK

DOG PARK

RESTROOM & CONCESSION

MASTER PLAN - FINAL



MUSICAL PLAY & SWINGS



AMPHITHEATER



LIBERTY SWING

- FREEDOM SWINGS**
- Standard
 - Wheelchair
 - Friendship

- THE PAVILION**
- BBQ
 - Pizza Oven
 - Tree Chandelier
 - Live Edge Tables x7
 - Live Edge Benches
 - Layout Tables

- HERO HEIGHTS**
- Scavenger Hunt
 - Animal & Tree Play Structures
 - Light-up Climbing Wall
 - Wise Old Tree Man
 - Giant Suncatcher
 - Night Lights
 - Electric Play
 - ADA Access
 - Talktube
 - Tunnels
 - Slides

- WILDFLOWER MEADOW & WHEELCHAIR PUMP TRACK**
- NATURAL WALKING PATH
 - WHEELCHAIR ACCESSIBLE PUMP TRACK
 - SEASONAL WILDFLOWERS
 - NATURE SENSORY EXPLORATION
 - PICNIC AREA



AGES 5-12 PLAY STRUCTURE

- THE HEADQUARTERS**
- 5-12 PLAY STRUCTURE

- VICTORY MOUNTAIN**
- Roller/Curved Slides
 - High/Low
 - Tunnels



- RESTROOMS & CONCESSION**

- AVIE'S DREAM THEATER**
- Terraced Log Seating
 - ADA Access
 - Mural
 - Gateway
 - Landscape
 - Lighting

- WALL OF HEROES**

- CREEK HEADWATER**
- Recirculating

- DANCING WATERS SPLASH PAD**
- Gateway Into Spray Ground
 - Giant Mushroom Sprayers
 - Themed Animals
 - Play Table
 - Picnic Area
 - Observation Deck



FOUNTAIN



FREESTANDING PLAY



AGES 2-12 PLAY STRUCTURE

- IMAGINATION SQUARE**
- Avie's House
 - Healing Hut
 - Vet Clinic
 - School House
 - Fountain of Hope
 - Barn

- BRIDGE**
- Telescope
 - Talk Tubes
 - Lighting
 - Educational Panels
 - Colored Plexiglass

- STREET SIGNS**
- Street Names
 - Ride or Walk

- THE ACADEMY**
- 2-12 TODDLER AREA
- Bridge Access
 - Younger Theme
 - Electrical Play Panels

- DIRECTIONAL SIGN POST**

- BRIDGE**
- Misters

- THE COVE LAKE**
- Misty Pier
 - Village
 - Hanging Lights
 - Lanterns
 - Fog & Bubbles
 - Rowboat



PIRATE SHIP

- BOARD WALK**
- Seating
 - Educational Panel

- BEACH & WATER PLAY**



AVIE'S PLACE - RESTORATION MINISTRIES

CONCEPTUAL PLAN

VERSION #4

OROVILLE, CA



#2447

AVIE'S PLACE



ARRIVAL & IMAGINATION SQUARE

- AVIE'S PLACE GATEWAY
- BRIDGE
- IMAGINATION SQUARE
- FOUNTAIN OF HOPE

ARRIVAL & IMAGINATION SQUARE



AVIE'S PLACE GATEWAY & ARRIVAL

Upon your arrival, there is an easily accessible parking lot and entry that welcomes you and your family to Avie's Place.

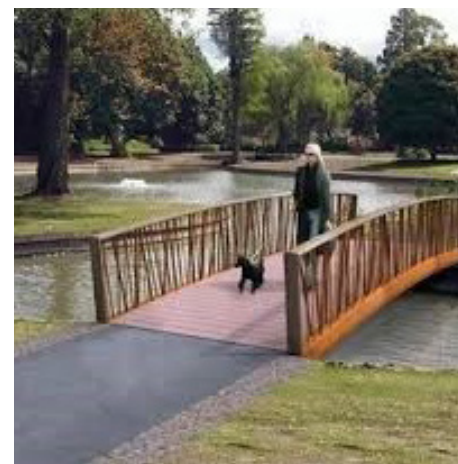
You are then greeted with a whimsical gateway entry marking the passage that transcends you from Oroville to the imaginative world of Avie's Place.



BRIDGE

There are 3 different Bridges in the park. Rainbow, Bravery and Adventure. The first connects you from Imagination Square, over the creek, to the rest of the park. The bridge is symbolic of human connection, communication and union.

The whimsical design ties to the gateway entry.



AVIE'S PLACE



IMAGINATION SQUARE

Imagination Square is a quaint town of fun that features themed playhouses including Avie's House and a block building workshop. The Fountain of Hope is at the core surrounded by bright, colorful flowers honoring Avalynn. This space creates a unique and memorable experience that allows for imaginations to run wild. Here you can be anything you want to be.



“The true sign of intelligence is not Knowledge but Imagination”.
- Albert Einstein



FOUNTAIN OF HOPE

The Fountain of Hope is the first element that greets you as you walk through the gateway entry. It is a tribute to commemorate the life of Avalynn Wallace.

The fountain will echo soothing sounds of falling water through Imagination Square. It will be surrounded by bright and colorful vegetation and a concrete seat wall. Visitors are welcome to make a wish, send a prayer, or pause for a moment to take in all the positivity that courses through Avie's Place.



“The soul of a child is
the loveliest
flower that grows in
the garden of god”

- Elizabeth George



HERO HEIGHTS PLAYGROUND

- WHAT IS INCLUSIVE PLAY?
- THE HEADQUARTERS
5-12 INCLUSIVE
PLAYGROUND
- THE ACADEMY
2-12 INCLUSIVE
PLAYGROUND
- VICTORY MOUNTAIN
- INCLUSIVE PLAY - OPTIONS

HERO HEIGHTS PLAYGROUND



INCLUSIVE PLAY

WHAT IS INCLUSIVE PLAY?

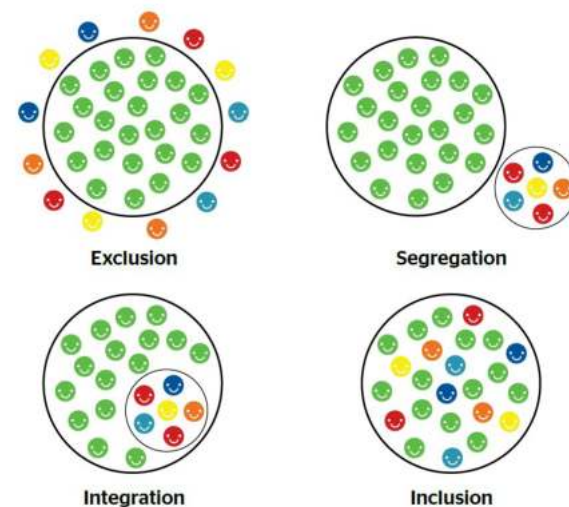
Inclusive play spaces provide opportunities for everyone to play together, are accessible, engage children of all ages and abilities and encourages them to interact with each other.

Inclusive play spaces allow children to connect with others in a positive way, relieve feelings of stress, stimulate creative thinking and exploration, boost confidence and enable children to enjoy the pleasure and benefits of play.

An inclusive play space aims to create enjoyable and challenging play opportunities for all children. Inclusive play spaces ensure:

- Accessibility to and within the play space
- Opportunities for children to actively engage in play in their own way
- Plenty of variation and choices to provide high play value

It isn't possible for every child to access everything in the play space in the same way. Inclusive play spaces are, however, places where disabled and non-disabled children can play together.



Principle 1:

Equitable use. The design is useful and marketable to people with diverse abilities.

Principle 2:

Flexibility in use. The design accommodates a wide range of individual preferences and abilities.

Principle 3:

Simple and Intuitive use. Use of the design is easy to understand, regardless of the user's experience, knowledge, language skills, or current concentration level.

Principle 4:

Perceptible information. The design communicates necessary information effectively to the user, Regardless of ambient conditions or the user's sensory abilities.

Principle 5:

Tolerance for error. The design minimizes hazards and the adverse consequences of accidental or unintended actions.

Principle 6:

Low physical effort. The design can be used efficiently, comfortably, and with minimum fatigue.

Principle 7:

Size and space for approach and use. Appropriate size and space is provided for approach, reach, manipulation, and use regardless of user's body size, posture, or mobility.



AVIE'S PLACE



HERO HEIGHTS PLAYGROUND



THE HEADQUARTERS 5-12 INCLUSIVE PLAYGROUND

This play area is specifically designed for children 5 and up.

It is sunken, allowing accessible ramps to connect to an on-grade path that is seamlessly integrated into the landscape. The grade change also allows for a natural-looking climbing wall to enclose the space.

Other elements include:

- Themed fall material
- Tunnels in climbing wall
- Spinners
- Roller/Curved Slides
- Accessible see-saw
- Scavenger Hunt





2-12 INCLUSIVE PLAYGROUND

This play area is specifically designed for toddlers to children around the age of 12. It is at the same elevation as the other play area allowing for the same integrated access. The tower is themed to attract a younger crowd.

Other elements include:

- Inclusive rocker
- Inclusive see-saw
- Giant sun catcher
- Electric play
- Talk tubes
- Telescopes

AVIE'S PLACE



HERO HEIGHTS PLAYGROUND

AVIE'S PLACE



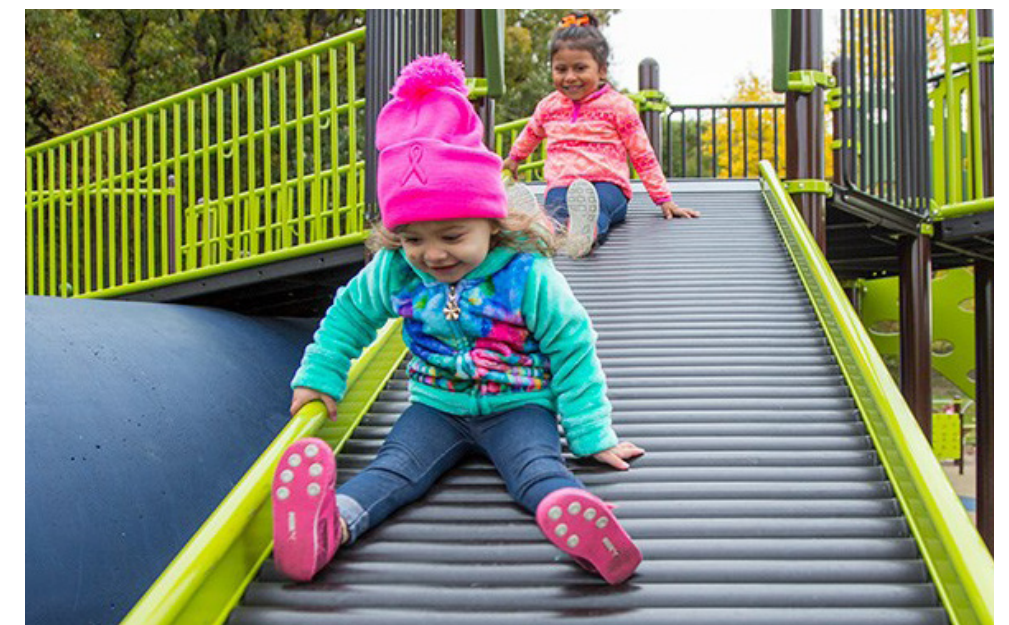
HERO HEIGHTS PLAYGROUND



VICTORY MOUNTAIN

Slide Mountain sits at the back of Hero Heights Playground. It has two wide on-grade slides nestled into the hillside. Multiple kids can slide down at a time creating a fun opportunity for racing and circuit play. To get back to the top you can take the ramp or climb the boulders.

Slide Play can boost mood, increase self-confidence, lower anxiety and improves sleep.



Inclusive Play - Options

1. Secluded Areas: Located within visible sight lines yet secluded enough for when children experience sensory overload and need to retreat and experience a quiet place to recalibrate.
2. Music Play: Naturally calming, allows for group or individual play, can bring about a feeling of success.
3. Slides: Sliding integrates multiple senses, including vestibular and tactile.
4. Swinging: The back and forth movement of swinging provides a child's nervous system with a wealth of visual stimulation and physical demands. They learn lessons in balance as well as the effort needed to speed up or slow down while maintaining their body in space.
5. Spinning: Spinning and rotating creates complex vestibular and proprioceptive (the ability to sense stimuli arising within the body regarding position, motion, and equilibrium) stimuli valuable to a child's development and helps children maintain proper body posture and balance while they play.





Quick guide on type of equipment for different disabilities



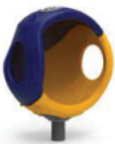


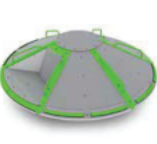




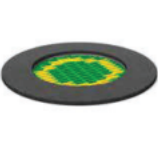

Every impairment or condition has a spectrum, which means two people with the same diagnosis may have different needs. The following content therefore contains some generalisations.

Included are some of the most common impairments or conditions for school-age children with suggested playground equipment that might be especially beneficial for children with that impairment or condition.

Remember: every child has strengths, weaknesses, likes and dislikes.

Find out what the children or members of your committee or community like and need, and what they look for in a playground. We have an extensive range of playground equipment that is inclusive and can be used by children with different impairments or conditions.

Speak to our team who will be able to advise you on play equipment that best meets the needs of the users.

Impairment/ Condition	Equipment											
	Multi-play unit	Group Swings	Cozy Cocoon	Mirage Revolution	Spinmee Inclusive	SpinR²	Titan	Unity Dome	Outdoor musical instruments	Playhouses	Trampolines	Dragonfly Seesaw
												
	Autism/sensory processing disorder	Encourages cooperation and socialisation as they tackle the many activities on offer while burning off excess energy.	Swinging develops children's vestibular system and group swing seats encourages cooperation and socialisation.	Provides a safe place that children can use to relax and de-stress when their anxiety rises.	Improves muscle control and balance while developing children's vestibular system.	Improves muscle control and balance while developing children's vestibular system.		Climbing improves motor skills such as balance and coordination. It also challenges, stimulates and develops a user's proprioceptive system.	Offers tactile and auditory sensory experience.	Provides a safe place that children can use to relax and de-stress when their anxiety rises.	Challenges, stimulates and develops a child's vestibular and proprioceptive system.	Challenges and develops children's vestibular system.
	Motor impairments	Multi-play unit with easy access encourages everyone to play together and promotes communication skills.	Provides full body experience and physical support. Encourages social play and provides a physical sensory experience.	Offers plenty of support. Spinning helps develop spatial awareness and stimulates different parts of the brain.	The Mirage seats on this roundabout offers plenty of support while providing children with fun physical and social play experiences.	Provides plenty of space for children using a wheelchair to play together with their friends and experience a motion that stimulates their vestibular system without leaving their chair.	The two wide seats provide plenty of space and support, plus they have a simple transfer in-and-out design for wheelchair users. Offers a great play experience for everyone.	The Mirage seat provides plenty of support, so all children can play together.	Wheelchair users will be able to use the rings to pull themselves along, while a child with some lower body mobility can use the rings to provide stability as they walk around the perimeter.	Helps in the development of fine motor skills, encourages socialisation and stimulates the auditory system.		Offers plenty of support and promotes social play.
	Down's syndrome	Provides good physical and cooperative opportunities with low level activities. Also encourages imaginative play.	Provides good physical, sensory and cooperative opportunities.		The Mirage seats on this roundabout offers plenty of support while providing great cooperative and social opportunities.		It delivers a fantastic vestibular experience and provides good postural support.		Provides good physical and cooperative opportunities. The various sized rings provide support along the way.	Low level activities that provides a fun sensory play experience.	Provides the opportunity for children to use language, cognitive and social skills through dramatic play.	Provides the opportunity for cooperative play with plenty of support.
	Attention Deficit Hyperactivity Disorder	Includes aerobic activities as well as pretend play to encourage exercise while having fun.								Children can use their imaginations to act in their own play stories providing spontaneous, child-initiated and open-ended play.	Exercise helps children with ADHD focus and manage moods.	
	Learning disabilities	Packed with fun activities that encourages cooperative and social play.	Encourages cooperative and social play and provides a good physical sensory experience.		Encourages cooperative and social play while stimulating different parts of the brain.							Offers a fun way of movement and encourages cooperative play as it requires two people to operate it.
	Visual impairments	With multiple levels of challenge and accessible routes, it provides children with various activities that stimulates their sensory system.	Swinging challenges, stimulates and develops children's vestibular system. They also prompt imaginative and social play.	Spinning offers children great physical play experiences while improving learning potential and rhythm.				Great at improving strength and dexterity. The different sized rings allow children to support and guide themselves around the Dome.	Provides a wonderful sensory experience that stimulates and develops the auditory system.			



THE COVE LAKE & VILLAGE

- COVE LAKE & PIRATE SHIP
- COVE VILLAGE
- FREEDOM SWINGS & MUSIC STUDIO
- DOG PARK & DANCING WATERS SPRAY GROUND
- AVIE'S DREAM THEATER & CONCESSION



COVE LAKE & PIRATE SHIP

Cove Lake is the largest pond at the end of the recirculating creek.

Visitors are welcome to picnic and play at the beach. There is also a wood boardwalk that leads to an accessible pirate ship! Here kids can be pirates for a day; shoot water sprays, look through telescopes or go on a treasure hunt.

Cove Village surrounds the Lake with a connective walking path.



AVIE'S PLACE



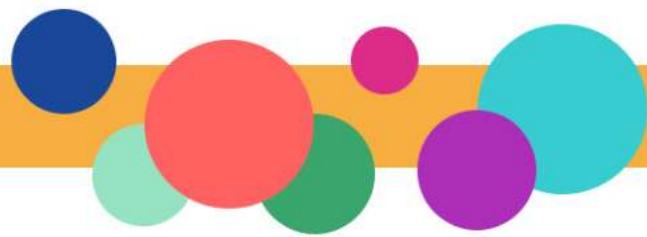
THE COVE - LAKE & VILLAGE



THE COVE - VILLAGE

The Cabins are located around Cove Lake. They are specifically for medically fragile families and those who have handicapped family members, to stay overnight to extend their stay at the park and to provide a unique and fun experience.

Each cabin will have its own unique personality. They will be able to sleep up to four and come equipped with a full bathroom, a small kitchenette and a private deck. Every cabin is accessible to all handicaps.



AVIE'S PLACE



FREEDOM SWINGS & MUSIC STUDIO

The Freedom Swings Area has something for everyone; standard swings, a wheelchair swing and friendship swing. You can fly high overlooking Hero Heights Playground.



The Music Studio has different pitch-perfect instruments users can play simultaneously, creating beautiful harmonies that carry through the park.

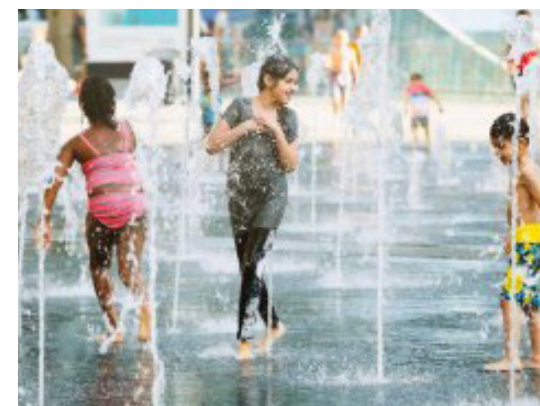


DOG PARK

For the convenience of our traveling visitors there is a dog park available for your canine family members. It is easily accessed from Hero Heights Playground and The Cove Lake & Village. There is a dog water fountain and bench seating.

DANCING WATERS SPLASH PAD

You are welcomed into Dancing Waters Splash Pad with a covered entry/picnic area. There are multiple ground sprays easily accessible for everyone to cool off in the warm summer months. A sun deck sits adjacent from the covered entry with comfortable lounge seating and picnic tables.





AVIE'S DREAM THEATER & WALL OF HEROES

Avie's Dream Theater is an outdoor amphitheater with terraced seating nestled into the landscape. The top and bottom level are completely ADA accessible. There is also a concession stand and restrooms conveniently located behind the terraced seating.

The Wall of Heroes is on the back of Avie's Dream Theater. Families can submit a photo and description of their hero; it is then displayed on the wall in weather proof shadow boxes for all to see.





WHEELCHAIR PUMP TRACK

The wheelchair pump track is located in a section of the wildflower meadow. It is a compacted dirt or paved track that is made specifically for wheelchairs to create an inclusive experience for all users. Bikes, scooters and trikes are also welcome. Guests can circulate the track with little effort; their wheelchair becomes a tool for fun.



WILDFLOWER MEADOW

The wildflower meadow is a passive natural play area people of all ages and abilities can explore. There will be seasonal wildflowers, native herbs and plants in the meadow and along a natural trail making this a great sensory experience.



**Thank You for
supporting
Avie's Place!**

